

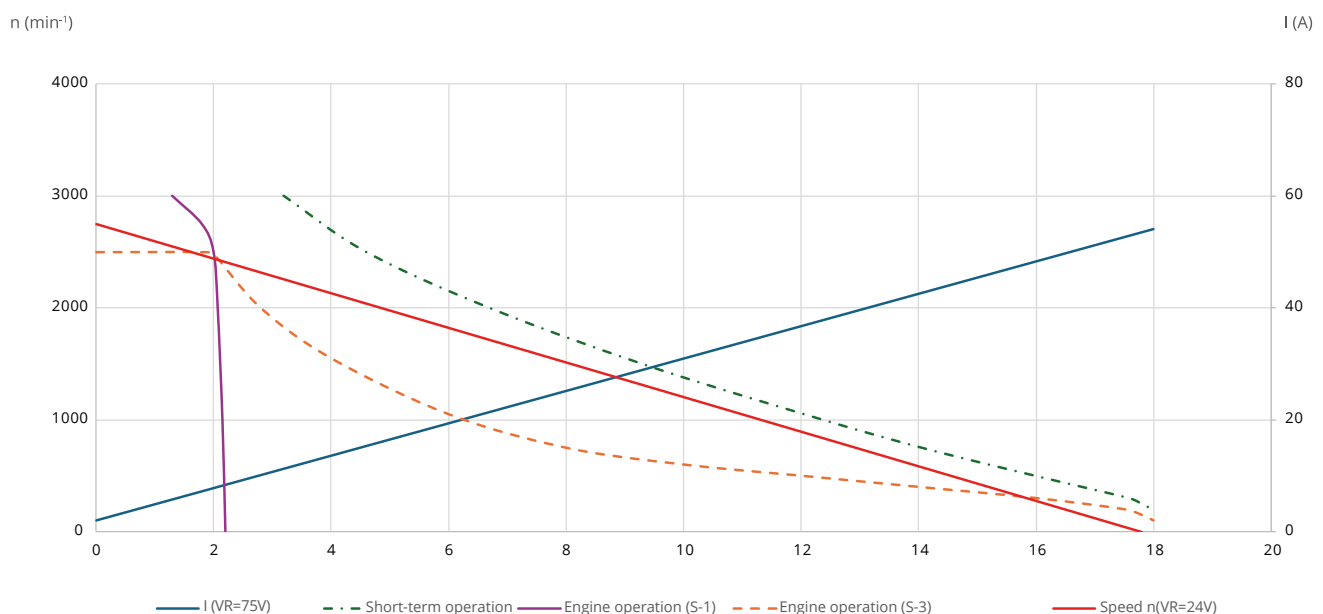
8DA50-9SD Product code: 068a-532
8DA50-9ST (Tacho) Product code: 068a-628
8DA50-9SE3E (Encoder) Product code: 068a-712

Technical data

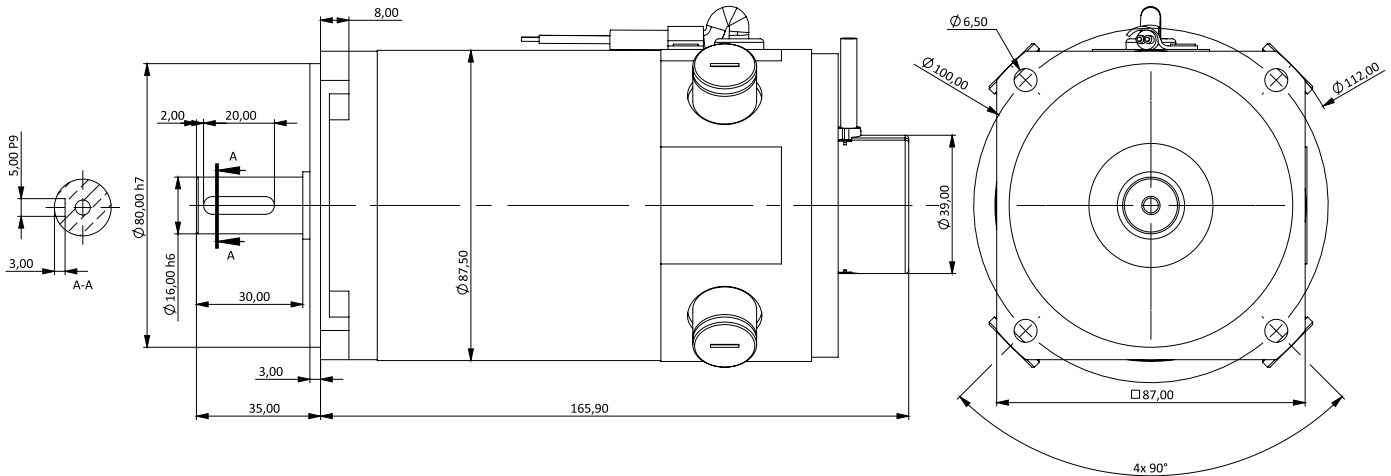
Values at rated voltage			8DA50-xxx
1	Rated power	W	500
2	Rated voltage	V	90
3	Rated torque	Nm	2.0
4	Max. torque	Nm (max)	6.0
5	Rated speed	rpm	2500
6	Max. no-load speed	rpm	3000
7	Rated current	A	6.6
8	Peak current	A	19.8
9	Ambient temperature range	°C	0-40
10	Standard protection classes	IP	40
11	Insulation class	-	F
12	Connection cable length (2x AWG20)	m	1

Characteristics			8DA50-xxx
13	Voltage constant at 1000 rpm	V/rpm	34.4
14	Torque constant	Nm/A	0.335
15	Electrical time constant	ms	2.17
16	Mechanical time constant	ms	3.55
17	Thermal time constant	min	30
18	Armature moment of inertia	Kgm ² ×10 ⁻³	54.05
19	Armature inductance	mH	1.54
20	Armature resistance	Ω	4.55
21	Weight without brake	kg	5.49

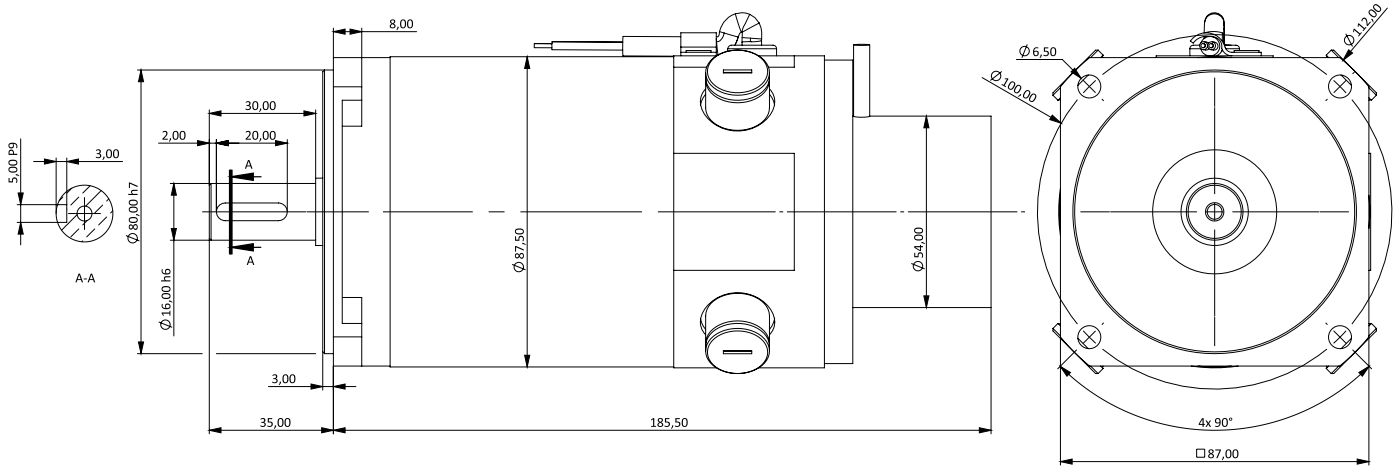
Characteristic curves



Dimensions: 8DA50-9SE3E



Dimensions: 8DA50-9ST



Accessories (optional) on request

- Gearbox
- Brake
- Tacho or encoder
- Different shaft designs (smooth, milled surfaces, with keyway)
- DC servo controller (Kern Drive)
- Matched cable length
- Version with plug
- Special paint finish
- 2nd shaft end
- Higher protection class

Notes

- Tolerances comply with VDE0530. A tolerance of $\pm 10\%$ applies to non-specified values.
- If a shaft seal is fitted on the drive shaft, slightly lower torque levels should be expected due to friction losses.
- The technical data provided in the table and power curves refers to a DC voltage supply with a permissible harmonic content of up to 5%.
- The data is only valid for use in ambient temperatures between 0°C and 40°C. Above or below this temperature range, there is a risk of permanent damage to the product.

The drawings and data in this document are provided as general information for our customers. For specific use cases, a separate quotation must be requested. Kern Antriebstechnik GmbH accepts no responsibility for any errors found in the respective datasheets. Kern Antriebstechnik GmbH reserves the right to make changes to its products without prior notice. This also applies to products currently available on the market, provided that – unless otherwise specified – the modification in question does not restrict the product's usability. All goods and trademarks mentioned in this datasheet are the property of Kern Antriebstechnik GmbH.